



# Choosing your door system

This guide has been designed to help you through the selection process required when choosing your cavity slider frame, door and hardware.

## Why use a cavity slider ?

The space saving benefits of cavity sliders have been loved by architects for many years, traditionally used in smaller rooms or where the space demanded by a hinged door is not available.

CS have led the evolution of cavity slider design, engineering stronger, more reliable hardware and allowing us to extend the cavity slider beyond a convenient space saver in your smallest room to opening up an infinite number of space options in your home. Whether you're looking for a discreet door that disappears quietly into the background or are looking to make a bold statement with a feature opening, we have a solution for you.

## Why use CS Cavity Sliders ?

We have been designing and engineering cavity sliding door systems for over 30 years. We are passionate about our products and believe in the benefits they offer you. And because our focus is on cavity sliders, we get it right: smooth running, trouble free and packed with features that are sure to delight.



- ✓ **Quality you can trust** – 10 Year Written Guarantee on all cavity sliders.
- ✓ **Reputation** – our cavity sliders are specified by more architects and builders than any other cavity slider in Australia or New Zealand.
- ✓ **Easiest to install** – our system is quick and easy to install and maintenance free, giving you (and your builder) the peace of mind that comes with knowing that once installed, the job is done.
- ✓ **Smoothest Running** – our patented wheel and track system ensures free rolling, smooth operation every time you use it.
- ✓ **Expertise** – we have the experience you can trust. We have engineers and customer services specialists in 6 branches throughout NZ and Australia to help you with every aspect from product selection to installation advice.
- ✓ **We do it all** – We make the cavity slider, fit the door and manufacture the handle.
- ✓ **Designed in New Zealand and made locally** in New Zealand and Australia.
- ✓ **We offer a huge range of unique features** from soft closing to sound control.

### We'll need the following detail from you:

	Page
1 Basic measurements.....	3
2 Door configuration.....	4
3 Extra features.....	4
4 Jamb detail.....	5
5 Finishing detail.....	6
6 Door style.....	7-9
7 Door hardware.....	10

## How does it work ?

Choosing the right cavity slider for your project may be more important than you think! Most common complaints about cavity sliders are due to inferior quality products or issues with installation. It is important to choose a high quality product that will last - remember the frame ends up inside your wall!

### CS Track & Carriage Features

- 1 Heavy duty one-piece extruded aluminium track.
- 2 Minimal clearance ensures door can't become jammed or jump off the track.
- 3 Large diameter wheels with precision ground bearings for smooth running carriages for years to come.
- 4 Radius on track surfaces reduces friction and prevents dust build up.
- 5 4-wheel carriages are standard on all oversized doors.
- 6 Quick release system allows the door to be removed easily from the cavity.



### Standard CS Cavity Slider Features

- 1 **Track**  
Heavy duty, one piece extruded aluminium.
- 2 **Head jambs**  
Unique design eliminates the need for unsightly pelmets.
- 3 **Closing jamb**  
Always quoted as standard. Not supplied if using NoClosingJamb detail.
- 4 **Back stud**  
Heavy duty, one piece extruded aluminium.
- 5 **Split jambs**  
Timber jamb fixed to aluminium split jamb.
- 6 **Pine nogs**  
Offset for adjacent wall fixing. Extra nogs are available or can be replaced with a full sheet of ply.
- 7 **Bottom plate**  
Heavy duty, one piece extruded aluminium.
- 8 **Skirting blocks**  
Fitted on either side of the bottom plate, to fix both linings and skirting.
- 9 **No visible floor track**  
Hidden T-guide at the base of the cavity guides the door through the opening.



## 1. Basic measurements

We can provide a system to suit nearly any size or weight door you need. You tell us the size and we'll make sure we manufacture a system that is strong enough to do the job.

### • Height and width dimensions:

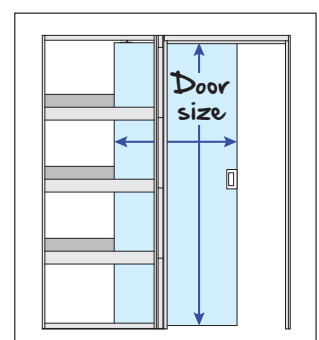
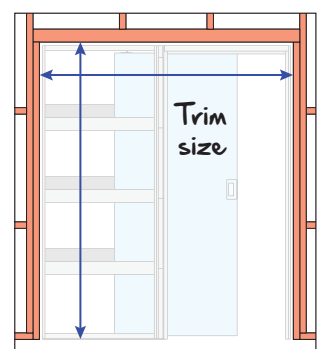
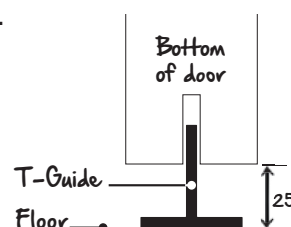
Typically this will be the size of your door or the size of the opening that has been framed into your wall (the 'trim') but we can calculate a size for you based on other dimensions too. Try the handy calculator available on our website: [www.csfordoors.co.nz](http://www.csfordoors.co.nz) or [www.cavitysliders.com.au](http://www.cavitysliders.com.au)

### • Wall dimensions:

We need to know your wall (stud) thickness (usually 90mm) and your wall lining thickness (usually 10 or 13 mm).

### • Floor clearance:

Let us know how much of a gap to leave under the door for your floor coverings. Typically we will allow 25mm, which is fine for most carpets or tiles. There is some adjustment available.



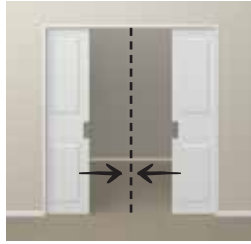
## 2. Door configuration

### SINGLE



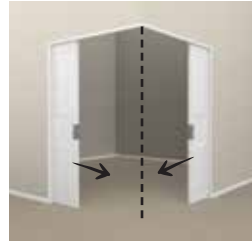
One door slides out from a single pocket

### BI-PARTING



One door slides from each pocket, meeting in the middle

### CORNER MEETING



One door slides from each pocket, meeting on a 90 degree angle

### OVERTAKING



Two (or more) doors slide out from a single pocket

### SURFACE SLIDING



Door slides along track mounted to the ceiling or side of the wall



Full-Height Corner Meeting SquareStop cavity sliders with CS NewYorker doors.



CS Overtaking Doors cavity sliders with NoClosingJamb detail and CS AluTec doors with CL400 Magnetic handle.

## 3. Extra features

### SOFT CLOSE/OPEN



### SELF CLOSING



### AUTOMATION



### SOUND CONTROL



### BRACING\*



### H3 COMPONENTS (wet areas)



### PLY PANELS (for fixing to)



### SPECIAL JAMBS (Extra wide/special timber)





## 4. Jamb detail

Choose from the following jamb detail options to match your desired look. At this point you'll also need to decide whether you will be using standard pine jambs (great for painting) or another species of timber such as Oak or Rimu.

### ARCHITRAVE



Flat jambs ready for architraves to be fitted over the top

### GROOVED



Jambs with a rebate for the wall linings

### ALUMINIUM



Usually specified in commercial designs or architectural homes

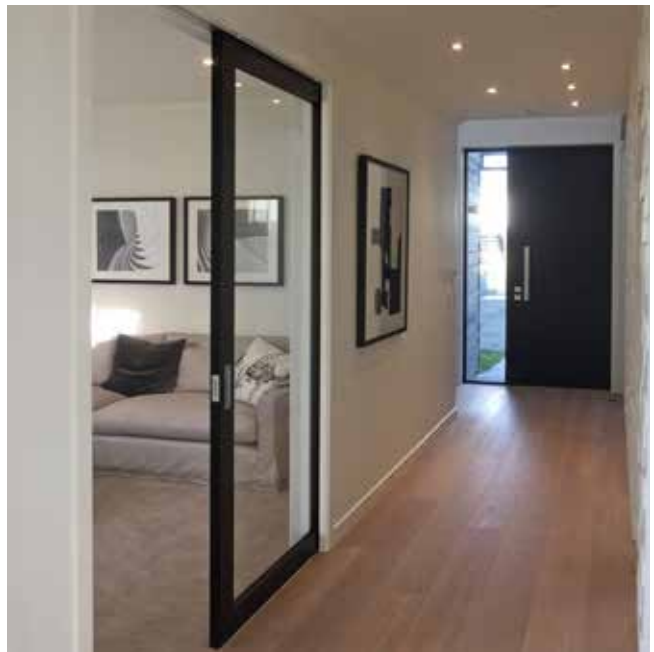
### SHADOWLINE



Special jambs aid the builder in creating a negative detail



CS Cavity Slider with AluSealed jambs and CS NewYorker door.



CS Cavity Slider with architrave jambs and CS NewYorker door.



CS Cavity Slider with Shadowline detail.



Bi-Parting CS Cavity Slider with architrave jambs & glazed doors.

## 5. Finishing detail

The following finishing details can be selected on their own to suit a specific situation or combined for a clean minimalist look. To combine all three, simply ask for the **CS SquareFormed Cavity Slider**.

### FULL-HEIGHT



The underside of the track finishes flush with the bottom of the ceiling. This gives the appearance of the ceiling running continuously from one room to another, creating a more spacious feel.

### NO CLOSING JAMB



A minimalist detail that allows for a flush finish at the wall where the door closes. Ideal for doors that remain open most of the time.

### SQUARESTOP



Jambs provide an easy solution for the builder to wrap wall linings around or across the face of the jamb, creating a seamless flow around the doorway.



## SquareFormed™ Cavity Slider

Minimalist sliding door solution combining Full-Height, No Closing Jamb and SquareStop jamb details. Ideal for large room dividers or areas such as hallways where you want a discreet door that is rarely closed.



## 6. Door style

### A Timber Doors

We are happy to order a door from one of our suppliers or fit your supplied door to your cavity. A wide range of styles are possible, including moulded panels, grooved patterns and specialty timbers. We recommend using doors with steel inserts for more stability and less likelihood of the door bowing.

If you are supplying your own door, please check first that it is not bowed or warped, and has a maximum thickness of 38mm.

Here's a sample of styles to get you started. Other options are available too - just ask!

U - Groove




V - Groove



Square Groove



Groove options 



Note: Timber doors carry the original manufacturer's warranty. Doors are not supplied pre-finished. The designs above are indicative. MDF/Duracoat doors are supplied ready to paint. Joinery doors are available ready to paint or ready to stain, with a variety of moulding/beading options. Confirmation of door detail must be made at time of order. Contact the manufacturer for more information.

...more options 

## B NewYorker®

The CS NewYorker has been purpose designed to work in conjunction with our cavity sliding system for a complete solution.

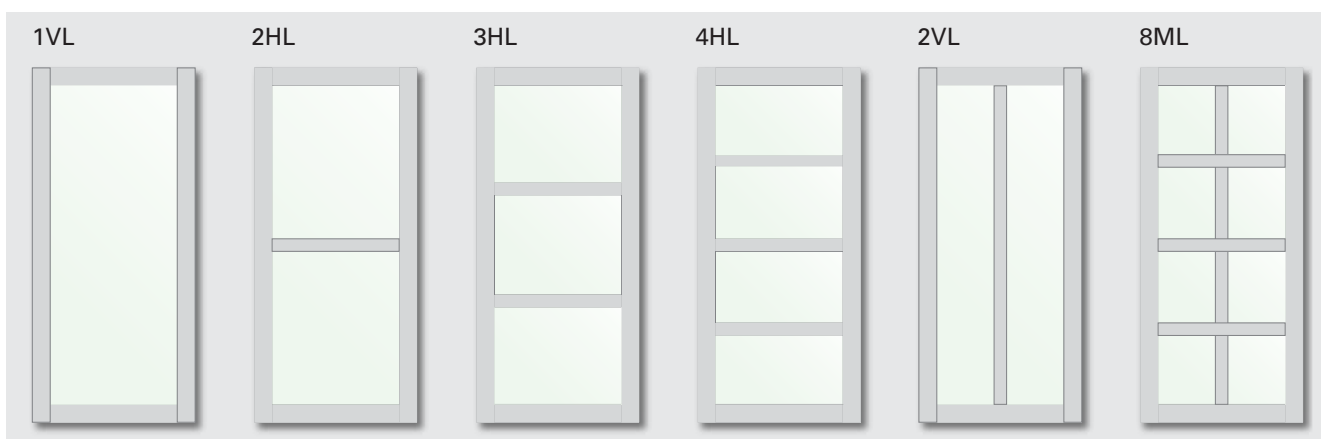
This stylish pre-finished door frame can be glazed using a wide range of materials, glass being the most popular. The perimeter frame has no visible screws or fastenings, and the mid rails (if required) maintain overall good looks without compromising strength or reliability.



Single CS Cavity Sliders with 4-lite CS NewYorker doors.

### Lighting configurations

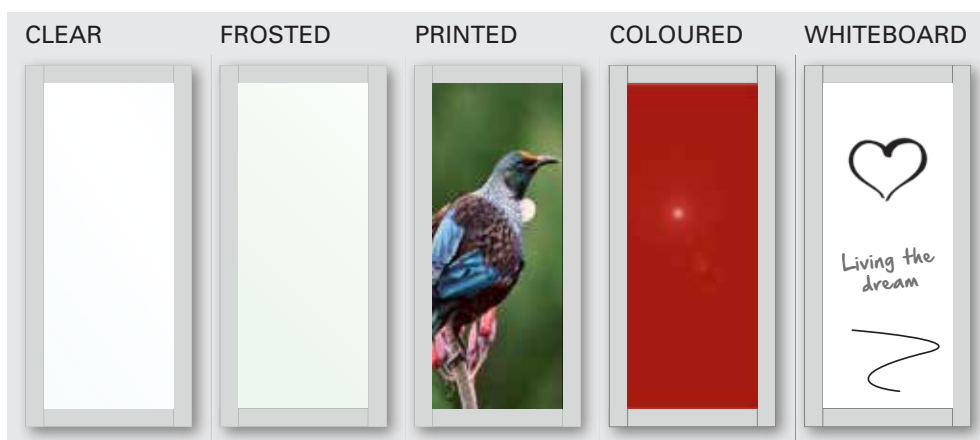
Choose from the following configurations or let us know what you require. Mid rails can be spaced evenly or unevenly if desired.



### Glazing options

The CS NewYorker may be glazed with a variety of glass types and thickness.

There are also a number of alternatives to glass, such as metal sheet, acrylic, MDF or hardboard sheet (all up to 10mm thick).



### Frame options

The CS NewYorker frame may be pre-finished in a choice of colours - anodised or powder coated. For powder coat colour options, refer to the latest Dulux Powder & Industrial Coatings Duralloy Colour Chart - available from [www.duluxpowdercoatings.co.nz](http://www.duluxpowdercoatings.co.nz)





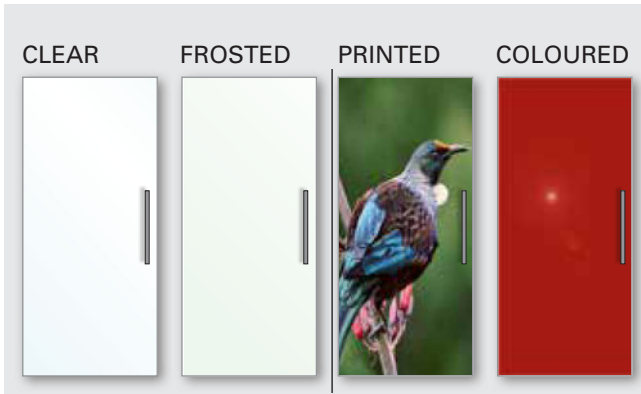
## 6. Door style

### c **FramelessGlass™**

CS FramelessGlass units are unique in that they incorporate a toughened frameless glass panel as the door leaf, creating a light and uninterrupted space - even with the door closed. Units are supplied with a clamp bracket that may be either exposed or hidden above the head jambs depending on the option selected at time of order.

Frosted glass and other finishes including "branded options" are available. 10mm or 12mm safety glass must be specified.

#### Glazing options

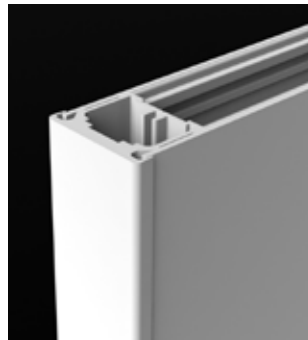


Full-Height FramelessGlass Cavity Slider with frosted glass.

### d **AluTec® Over Sized Doors**

The CS AluTec is a flush pre-finished door with no visible screws or fastenings. Constructed entirely of aluminium, it has been designed to reduce the risk of bowed doors and is ideal as an oversized door or large room divider due to its stability.

A wide range of colours are available. Check availability before placing your order.



SquareStop Cavity Slider with CS AluTec door.

### e **MirrorLite™**

The CS MirrorLite is a pre-finished high quality double sided mirror door with all aluminium construction for stability.

The unique design of the CS MirrorLite allows the mirror to cover the entire face of the door to within 9mm of the front and rear edges.

The mirror skin may be replaced with material of a similar thickness (4mm) e.g. paint finish on one side of a walk-in wardrobe.



CS MirrorLite door.

## 7. Door hardware

CaviLock handles have been specifically designed for cavity and surface sliding doors, to suit both residential and commercial applications.

We also have a factory fitting service and can prepare the handle cutout for you.



### Timber/aluminium doors



**CL200 PASSAGE**



**CL200 PRIVACY**



**CL100 FLUSH TURN**



**LOUEY & TIMBER EDGE PULL (sold separately)**



Satin Chrome    Bright Chrome    Satin Nickel    Oil Rubbed Bronze    Matte Black



Satin Chrome    Polished Brass



Satin Chrome    Polished Brass    Oil Rubbed Bronze

### CL400<sup>®</sup> Magnetic



**CL400 PASSAGE**



**CL400 PRIVACY**



**CL400 KEY LOCKING**



**CL400 BI-PARTING**



**CL400 ADA**



Satin Chrome    Bright Chrome    Satin Nickel    Oil Rubbed Bronze    Matte Black

Note: Colours shown may not accurately represent product. We recommend viewing a sample before purchasing.

Not all finishes are available for all handles.

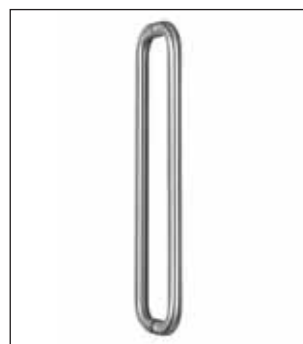
### Frameless glass doors



**SCHLAGE TURIN**



**LEGGE DALCO 1213**



**MADINOZ 6300**

# Notes

## Door Ref/Location:

### 1. Measurements

Door Size (H x W):

Stud thickness:

Lining thickness:

Floor clearance:

### 2. Configuration:

### 3. Extra features:

### 4. Jamb type:

Jamb finish:

### 5. Finishing details:

### 6. Door style:

Glass type:

### 7. Handle type:

Handle finish:

## Door Ref/Location:

### 1. Measurements

Door Size (H x W):

Stud thickness:

Lining thickness:

Floor clearance:

### 2. Configuration:

### 3. Extra features:

### 4. Jamb type:

Jamb finish:

### 5. Finishing details:

### 6. Door style:

Glass type:

### 7. Handle type:

Handle finish:

## Door Ref/Location:

### 1. Measurements

Door Size (H x W):

Stud thickness:

Lining thickness:

Floor clearance:

### 2. Configuration:

### 3. Extra features:

### 4. Jamb type:

Jamb finish:

### 5. Finishing details:

### 6. Door style:

Glass type:

### 7. Handle type:

Handle finish:

Visit [csfordoors.co.nz](http://csfordoors.co.nz) or [cavitysliders.com.au](http://cavitysliders.com.au) for more ideas....

## Auckland Head Office

---

5 - 7 Rakino Way, Mt Wellington, Auckland, New Zealand

☎ +64 9 276 0800

✉ info@csfordoors.co.nz

☎ +64 9 276 2525

🌐 www.csfordoors.co.nz



## BOP/Waikato

---

40 Newton Street, Mt Maunganui, New Zealand

☎ +64 7 928 0800

✉ salesbop@csfordoors.co.nz

☎ +64 7 928 2525

🌐 www.csfordoors.co.nz

## Christchurch

---

6 Marylands Place, Middleton, Christchurch, New Zealand

☎ +64 3 348 6158

✉ saleschch@csfordoors.co.nz

☎ +64 3 348 6150

🌐 www.csfordoors.co.nz



## NSW Head Office

---

Unit 1, 7-11 Rodborough Rd, Allambie Heights, NSW 2100, Australia

☎ 1300 9 SLIDE (1300 975 433)

✉ estimating@cavitysliders.com.au

☎ +61 2 9905 7088

🌐 www.cavitysliders.com.au



## VIC / SA

☎ +61 411 546 689

## QLD

☎ +61 434 314 556