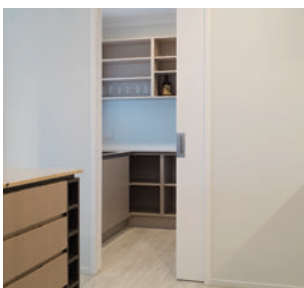




CS SofStop with powder coated 4-lite CS NewYorker door.



Single with flush door.



Single with joinery door.



Single with 4-lite NewYorker.



Features

Combining all the features of Australasia's highest quality cavity sliders with innovative soft close technology, the CS SofStop is a must-have wherever quiet and safety are priorities.

- ▮ Designed to fit into standard 90mm wall framing.
- ▮ Single and Twin (soft open/soft close) options available.
- ▮ Patented track design is easy to clean.
- ▮ Suitable for areas where quiet is required, such as bedrooms, offices and patient rooms.
- ▮ Gentle braking and closing of door helps prevent slamming and injury.
- ▮ The soft close mechanism is hidden from sight, yet remains fully serviceable.
- ▮ Available as Single and Bi-Parting (double) units
- ▮ Options available for doors up to 100kg. A small amount of force is necessary to open the door.
- ▮ Minimum door width: 625mm (dependant on door type).
- ▮ Best operating temperature: 10°C to 40°C.

Technical Information

Useful formulas (online calculator www.cavitysliders.com.au)

Dimension Required	Single	Bi-Parting
Trim height*	DH + 95	DH + 95
Trim width*	(DWx2) + 30	(DWx4) + 10
Distance between jambs*	DW - 31	(DWx2) - 42
Distance over jambs (Arch)	DW + 13	(DWx2) + 6
Distance over jambs (Grvd)	DW + 31	(DWx2) + 20
Floor to top of head (Arch)	DH + 38	DH + 38
Floor to top of head (Grvd)	DH + 49	DH + 49
Floor to underside of head*	DH + 18.5	DH + 18.5

All dimensions in millimetres. DH=Door Height, DW=Door Width
 * = Same calculations for Architrave (Arch) & Grooved (Grvd) jambs

How to specify (example)

Product:	~ CS SofStop by CS Cavity Sliders
Location:	~ Bedroom 1
Door leaf dimensions:	~ 2040mm x 820mm
Door type:	~ 38mm joinery door
Door finish:	~ Paint Quality
Single or Bi-Parting:	~ Single
Jamb type & finish:	~ Pine flat (for architraves)
Framing material & size:	~ 90mm timber framing
Wall lining thickness:	~ 10mm
SofStop mechanism:	~ CS 50kg SofStop Single
Handle type:	~ CaviLock CL200 Passage

Full specifications are available on www.natspec.com.au

Quality

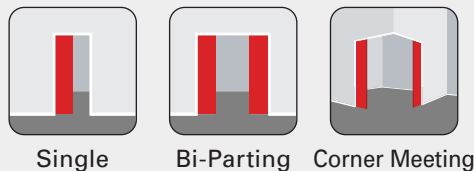
Our aim is to manufacture the best sliding door systems available. Every component used within our products is uniquely designed with this in mind and backed by our manufacturer's guarantee.

WE GUARANTEE PRODUCT WITH OUR SERIAL CODES FOR UP TO TEN YEARS*

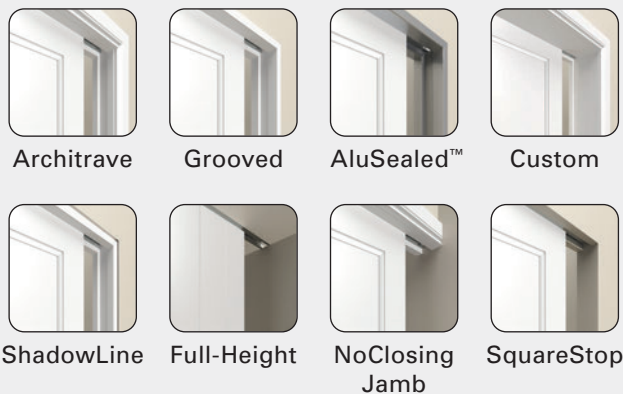
Options

Incorporate any of the architectural detail options below with the CS SofStop cavity slider to create a specific look or to provide a unique solution to your design requirements.

Configurations



Jamb Options



Specialised

Ply panels
Door Protrusion
H3 Components

Door Options

Minimum door width is shown below for common door types. Contact us for more information on door width required for other configurations.

SofStop® Single (Soft Close)	Minimum Door Width (mm)					
	Timber		AluTec®		NewYorker®	
	Single	BiPart	Single	BiPart	Single	BiPart
20, 50 kg	625	665	715	730	735	750
100 kg	710	750	800	815	820	835

SofStop® Twin (Soft Open & Close)	Minimum Door Width (mm)					
	Timber		AluTec®		NewYorker®	
	Single	BiPart	Single	BiPart	Single	BiPart
50 kg	840	880	930	945	950	965

Single 20kg/ 50kg

	Timber Door	New Yorker	AluTec (with 140 Front Stile)	Mirror Lite	Frameless Glass
Single	625	735	715	751	600
Bi-Parting	665	750	730	751	655
NCJ	690	750	730	751	655
Corner Meeting	690	750	730	751	655
Tracks (2 stops)	755	765	745	751	705
Barn Track Single	610	610	610	N/A	N/A
Barn Track Bipart	610	N/A	N/A	N/A	N/A

Single 100kg

	Timber Door	New Yorker	AluTec (with 140 Front Stile)	Mirror Lite	Frameless Glass
Single	710	820	800	N/A Door too heavy	690
Bi-Parting	750	835	815		740
NCJ	775	835	815		740
Corner Meeting	775	835	815		740
Tracks (2 stops)	840	850	830		790
Barn Track Single	610	610	610		N/A
Barn Track Bipart	610	N/A	N/A		N/A

Twin (50kg)

	Timber Door	New Yorker	AluTec (with 140 Front Stile)	Mirror Lite	Frameless Glass
Single	840	950	930	972	820
Bi-Parting	880	965	945	972	870
NCJ	905	965	945	972	870
Corner Meeting	905	965	945	972	870
Tracks (2 stops)	975	985	965	972	925
Barn Track Single	810	810	810	N/A	N/A
Barn Track Bipart	810	N/A	N/A	N/A	N/A