

These Installation Instructions should be used when removing the door from your CS Cavity Slider.

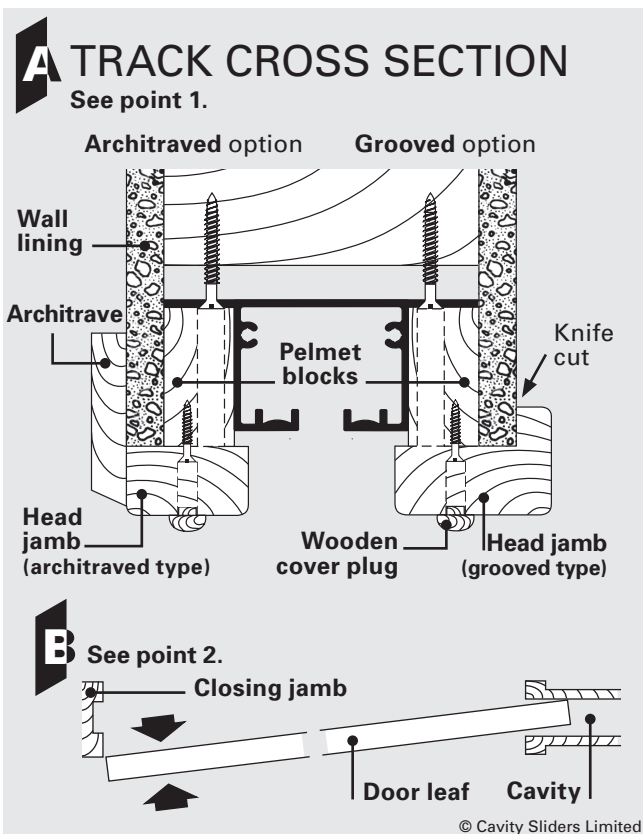
1 Remove head jamb (if fitted) (drawing A)

The head jamb must first be removed so that access may be gained to the carriages.

Choose the best side to remove the door from and remove the head jamb on that side by first removing any architraves.

Hint: Make a thin knife cut where any paint joins two components so as not to tear existing paint work.

Remove the wooden plugs covering the screw heads. Remove the screws holding the head jamb in place, then gently tap jamb to remove.



2 Remove door from track (drawing B, C, D).

Fit the club end of the adjusting spanner over the hexagonal nut at the bottom of the hanger pin (drawing C).

Use the extended part of the spanner to press down the plunger pin that protrudes up from the mounting plate. Once this plunger is fully depressed, slide the spanner sideways towards the plunger pin.

The whole carriage (including the shaft) will now disengage from the mounting plate.

It is not always easy to slide the spanner sideways. You may need to relieve the door's weight by putting a wedge between door and floor.

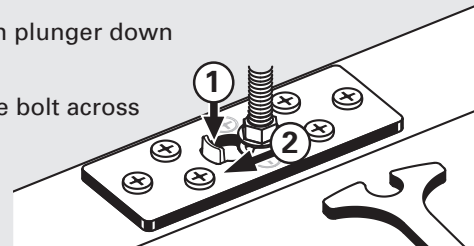
If you have trouble removing the door out of the cavity: lift the unlocking clip (drawing D) and slide the black nylon T-guide backwards for a second.

You can now remove the door (drawing B).

C See points 2 and 3.

① Push plunger down

② Slide bolt across

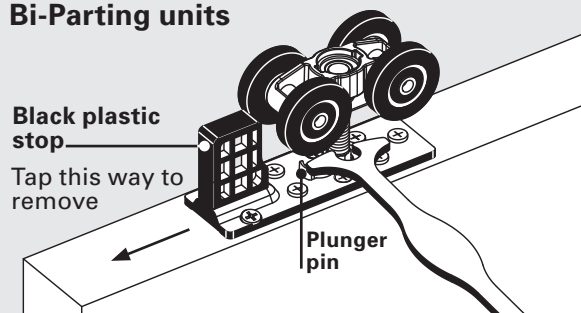


Bi-Parting units

Black plastic stop

Tap this way to remove

Plunger pin



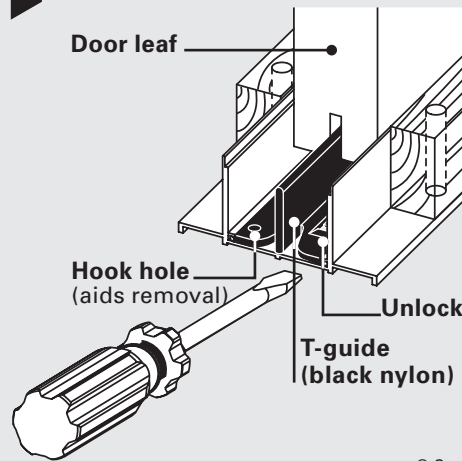
D See point 2

Door leaf

Hook hole (aids removal)

Unlocking clip

T-guide (black nylon)



© Cavity Sliders Limited

3 Bi-Parting units (drawing C).

Follow instruction 2, then remove the black plastic stop that is tightly fitted into the mounting plate at the front of each door leaf by tapping it out in the direction shown, using a hammer and drift (drawing C).

4 Removing carriages

If you also want the carriages out:

Slide them toward the notched end of the track and then take them out.

5 Replacing the door or the carriages

Follow the same steps, but in reverse order.

Drawings are not to scale.